

ProFace X Series

Face and Palm Recognition with
Body Temperature and Mask Detection



ProFace X Series is a fully upgraded version of the ProFace product line, which is designed to deal with a wide range of market requirements. This product series is powered by a special ZKTeco-customized CPU for running our intellectualized recognition algorithms and the latest computer vision technology.

The ProFace X series supports both facial and palm recognition with large capacity and rapid recognition speeds, boosting the security performance in all aspects. These products also help to eliminate hygiene concerns not only because of the contactless recognition technology it is equipped with, but the ProFace X (TD) have new functions namely body temperature and masked individual identification.

The facial recognition capability of the series has reached a new height in the biometrics technology industry with a maximum of 50,000 facial templates with recognition speeds of less than 0.3 sec per face. The ProFace X series is also equipped with a powerful anti-spoofing ability against almost all types of fake photos and videos attack. In addition, the 3-in-1 palm recognition (Palm Shape, Palm Print and Palm Vein) is performed in less than 0.4 seconds and the palm data acquired will be compared with a maximum of 5 000 palm templates.

The ProFace X (TD) can also operate in an unsupervised mode when screening for body temperature and face masks. This means that any person accessing an area can go to be screened at these devices first to be verified that they have a mask on and that they are in the prescribed temperature needed to access the area. This all happens without an individual needed to be pre-enrolled on the system so no recognition needed. This feature is perfect for public access areas like corporate buildings, schools, shopping centers, hospitals or any public area where temperature and mask screening need to be done first. This feature can also be used in conjunction with any access control barrier like a turnstile, flap barrier, speed stile etc.

Specifications G (: GL Exclusive Feature)

Capacity

G Faces	30,000 (1:N)
	50,000 (Optional)
Palm	5,000 (1:N)
Users	
Cards	50,000 (ProFace X[P] Only)
G Transactions	1,000,000
User Photos	30,000
Event Photos	10,000

Software Compatibility

ZKBioSecurity Software

Hardware

- G 900MHz Dual Core Customized AI CPU
- G 512MB RAM / 8G Flash
- 8" High light (400lux) IPS Touch LCD
- G 125KHz EM Reader / 13.56MHz MF(Optional)
- 2MP WDR Low Light Camera
- Adjustable Light brightness LED
- High Sensitivity Microphone
- Distance Detection Sensor
- Reset Button and Tamper Switch

Power

Operating Voltage: 12V DC
Current Draw: < 2,000mA

Access Control Interface

Lock Relay Output
Alarm Output / Auxiliary Input
Exit Button / Door Sensor

Special Functions

- G IP68 & Ik04 (ProFace X[P] Only)
- G 0.3s High Speed Facial Verification
- Liveness Detection
- HTTPS Communication Encryption (Optional)
- G Event Snapshot

Standard Functions:

Access Levels, Groups, Holidays, DST,
Duress Mode (Password), Anti-Passback,
Record Query, Tamper Switch Alarm
Custom Wallpaper & Screen Saver

Preventative Measures

Mask detection
Body temperature detection -
(ProFace X [TD] Only)
Temperature Measurement Distance:
30cm~50cm (1ft~1.64ft)
Temperature Measurement Accuracy:
+/-0.3°C (+/-32.54°F)
Temperature Measurement Range:
34°C~45°C (93.2°F~113°F)

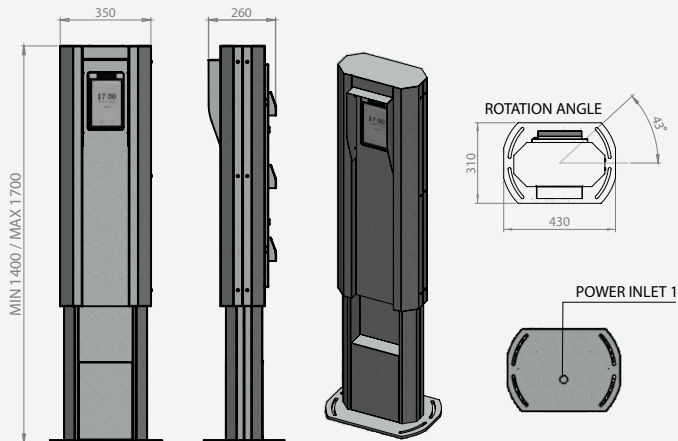
Communication

TCP/IP
Wiegand Input / Output
Wi-Fi (ProFace X[P] Only)
RS485 / RS232

Additional Info

Face Algorithm: ZKLiveFace5.8
Palm: FAR ≤0.01%; FRR ≤1% Working
Working Temperature: -30°C ~ 60°C
Working Humidity: ≤93%
Storage Temperature: -40°C ~ 65°C
Storage Humidity: ≤93%
Net Weight: 853g
Dimensions (H*L*D): 227*143*26.1mm

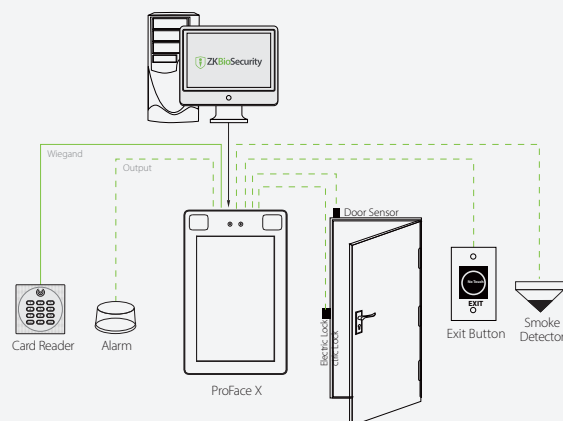
Adjustable Stand G For Vehicle Entrance (ProFace X[P])



Rainshield (ProFace X[P])



Configuration



Dimensions (mm)

